

Valve description:

Body material:A217 WC6

Wedge:A217 WC6+TL6

Stem:A182 F6a

Seat Ring:F11+STL 6

Pin:A108 1035

Bonnet:F11+316

Packing: Flexible graphite

Seal ring:304+Graphite

Design and manufacturing standards:

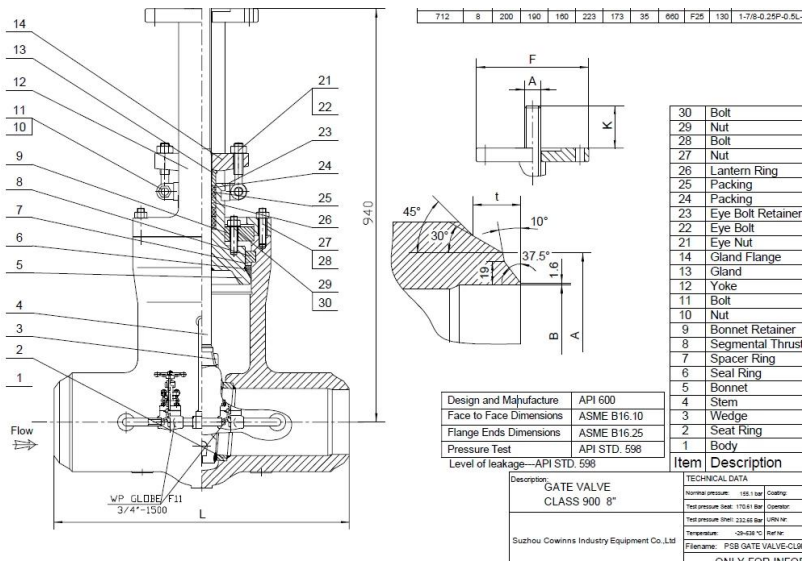
Face to face dimensions :ASME B16.10

Flange end dimensions: ASME B16.25

Design and manufacture stand: API 600

Pressure test: API STD .598

Valve drawing:



Valve after painting:

