

Material list:

Body material:A217 WC6

Seat Ring:F11+STL 6

Wedge:A217 WC6+TL6

Stem:A182 F6a

Bonnet:F11+316

Seal ring:304+Graphite

Pin:A108 1035

Packing: Flexible graphite

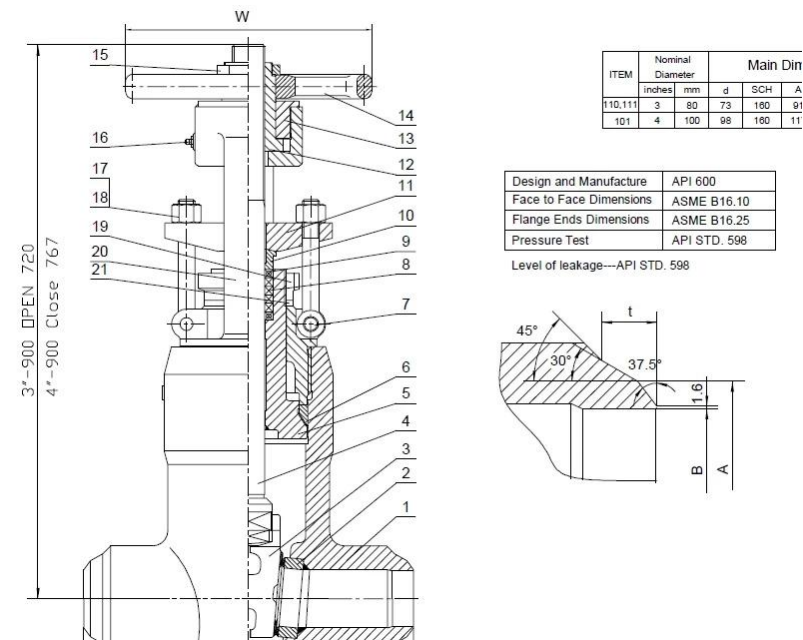
Design and manufacture stand: API 600

Face to face dimensions :ASME B16.10

Flange end dimensions: ASME B16.25

Pressure test: API STD .598

Valve drawing



Valve painting



For more information of [pressure seal gate valve](#) please contact with Cowinns sales department.